



Salmon-Safe certified Farms around Puget Sound
for Stewardship Partners, Seattle, WA

Map created by Karsten Vennemann of Terra GIS
while working at CommEn Space in 2006

Terra GIS provides expertise in Geographical Information Systems, consulting for social and environmental issues, and subjects related to sustainable development.

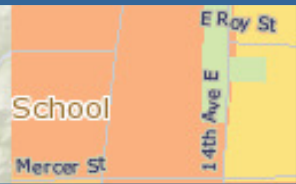
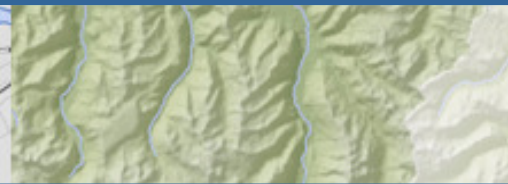
We are working hard to turn spatial information into knowledge.

Our Services

- Environmental research, field work and reporting
- Spatial analysis and cartography
- GIS data development and spatial databases
- Implementation of web mapping and information systems
- Development of specialized geospatial tools
- Training and support

We specialize on projects related to

- Conservation
- Natural Resources Management
- Environmental Issues
- Public and Social Engagement
- Sustainable Development



Scientific Research, Analysis and Reporting

Our main focus is on natural resources, soils, conservation planning, and sustainable development. We offer complete project management and have experience in a large number of subject areas regarding the impacts of human activities on the natural environment. Our staff has experience in field work that includes soil, vegetation and archaeological mapping, land use surveys and GPS data collection. We partner with specialists to cover subject areas that are outside of our main focus and expertise and are happy to discuss with you individually your project specific goals and requirements.

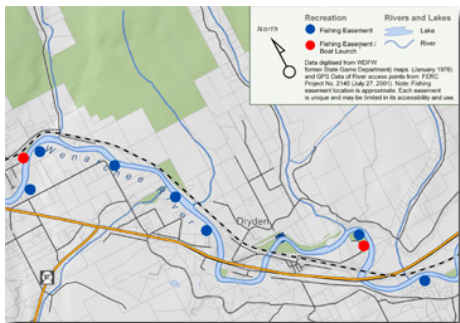
Spatial Analysis and Cartography

We have a strong background in producing cartographically pleasing maps and in conducting in depth and interdisciplinary spatial analysis and modeling. No matter if you need a simple overview map or have a comprehensive project to support your planning needs - we can supply a solution.

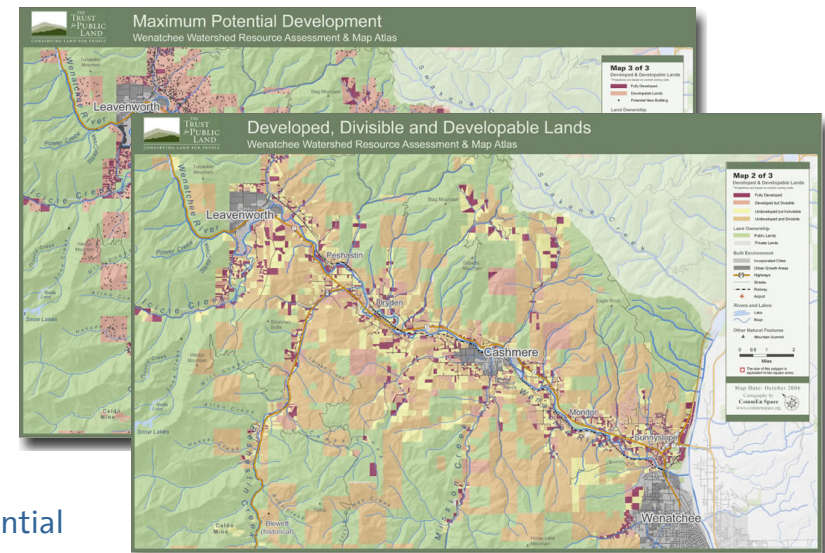
Development analysis and maps

The three sample maps shown are part of a project for *The Trust for Public Land*.

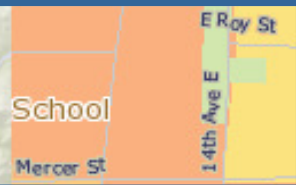
The “Wenatchee Watershed Vision” includes thematic maps of land ownership,



agricultural lands, development probability, potential development, and recreation. The maps* to the right show 1) potential development and 2) developed, divisible and developable lands and are result of comprehensive spatial analysis and modeling. The map to the left shows public fishing access to the Wenatchee River.



*Maps and analysis were completed by Karsten Vennemann of Terra GIS while working at CommEn Space in 2006

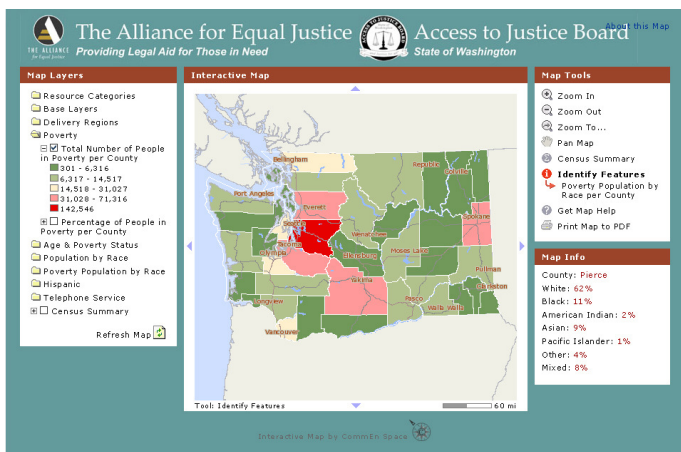
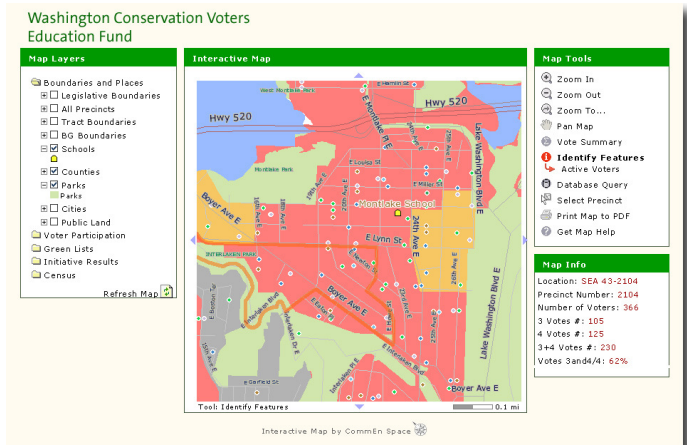


Web Maps and Information Systems

We implement creative interactive web mapping solutions and spatial databases that can help build efficiencies for workflow processes, facilitate tasks, help plan and prioritize work, enable spatial analysis, thus providing answers to many different kinds of questions. Below are two examples of such systems. More examples can be found at www.terragis.net.

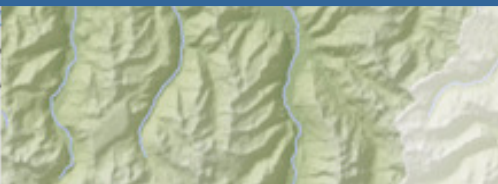
Mapping voters and members

Washington Conservation Voters (WCV) is a voter advocacy organization. Our web mapping application supports their prioritization, outreach and strategic planning programs. The site maps individual members of WCV member groups in WA State, voter participation, initiative results, and census information. Comprehensive tools for reporting, building queries, and identifying members and voters according to target criteria on the map help to identify target areas for outreach and voter engagement activities.



Resources for legal assistance in Washington State

The Washington State Bar Association/ Access to Justice Board site maps resources of Legal Aid providers, Pro Bono Lawyers and demographic data (census) for the entire State of WA. The application encompasses over sixty GIS layers ranging from ethnicity, telephone service coverage, to roads and public lands data. It was initially build at CommEn Space in 2006. Starting April 2007 Terra GIS is hosting the application and have added new layers and functionality to the site.



Spatial Tools

We have implemented custom geospatial tools for several clients. Whenever you want to know *where* - we can help. Solutions can be web based or for desktop usage. We can provide solutions using proprietary or open source software.

Matching information to member records

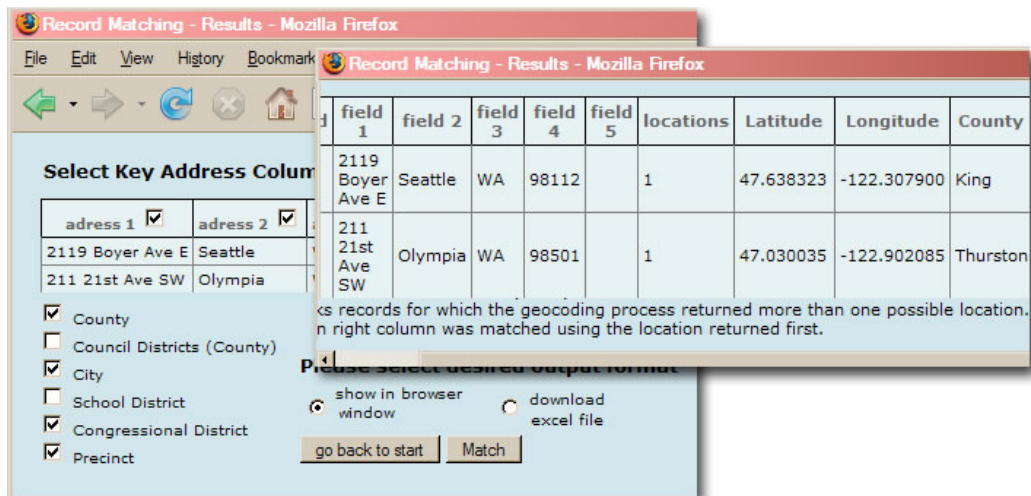
Do you have data records that are lacking information?

The example on the right shows screen shots of a web based tool for matching spatial information such as County, City, School District, Congressional District and Precinct to address files (e.g. member lists containing street addresses). With minimal effort this tool can be customized to match other spatial information.

Training and Support

Contact us if you are interested in GIS training classes or support services. We can create a custom class that can cover your needs. Software we are proficient in includes:

- ArcGIS
- ArcView 3.X and Arc/Info7
- Mapserver
- PostGIS and PostgreSQL



Record Matching - Results - Mozilla Firefox

field 1	field 2	field 3	field 4	field 5	locations	Latitude	Longitude	County
2119 Boyer Ave E	Seattle	WA	98112		1	47.638323	-122.307900	King
211 21st Ave SW	Olympia	WA	98501		1	47.030035	-122.902085	Thurston

Select Key Address Column

address 1 ☒ address 2 ☒

☒ County
☐ Council Districts (County)
☒ City
☐ School District
☒ Congressional District
☒ Precinct

Please select desired output format

☒ show in browser window ☐ download excel file

go back to start Match

Contact

Karsten Vennemann

Terra GIS Ltd.

TERRESTRIAL ENVIRONMENT REGIONAL ANALYSIS

2119 Boyer Ave E

Seattle, WA 98112 USA

call ..1 206 905 1711

fax ..1 925 905 1711

email: karsten@terrakis.net

www.terrakis.net